

A PROJECT BY



PALLADIUM

ANDHERI EAST

A2O REALTY
ARIF FAZLANI GROUP

AN ICONIC LANDMARK
WITH MODERN
ARCHITECTURE
AT ANDHERI EAST,
POSSESSION BY
DECEMBER
2024

Artist's Impression



EXPERIENCE
THE EPITOME OF
PRODUCTIVITY & SUCCESS
WITH A CARPET AREA
OF 1.50 LAKH SQ. FT. &
A FLOOR-TO-CEILING
CLEARANCE OF 12 FT.



WHERE AESTHETICS
MEET FUNCTIONALITY



- A premier commercial property in the heart of Andheri East



- Ideal for standalone building.



- Strategically situated at the most premium location of Andheri East



- Excellent connectivity to all prime locations of the city



- Ease of access through various transportation modes



- Intelligently planned and generously spacious office spaces spanning from the ground to the sixth floor



- Imposing facade design conspicuously visible from a distance



- Large and convenient basement parking with a total capacity of around 160 spaces





EXPERIENCE THE
EPITOME OF
SOPHISTICATION AND
PROFESSIONALISM



WHERE FIRST IMPRESSIONS ARE
LASTING IMPRESSIONS



WHERE ELEGANCE MEETS
CONVENIENCE

ANDHERI EAST

GETS ITS NEXT BIG
COMMERCIAL CYNOSURE
IN THE PALLADIUM

BY **A2O**
REALTY
ARIF FAZLANI GROUP



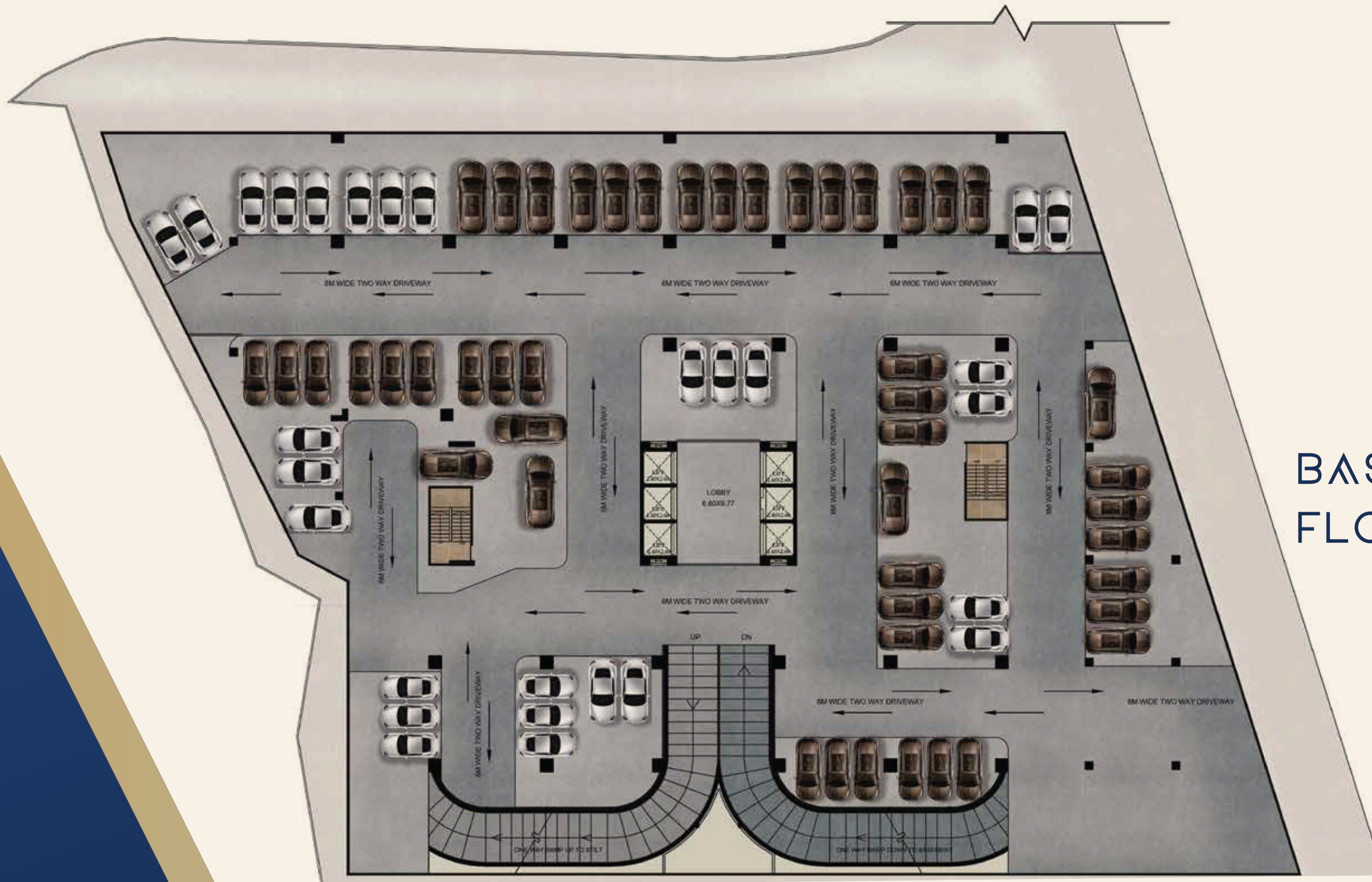
WHERE COMMERCIAL ASPIRATIONS MEET ACCESSIBILITY

- Chakala Metro Station: 950 m.
- CSIA: 2.2 kms.
- Western Express Highway: 2.2 Kms.
- Andheri Railway Station: 3.4 Kms.
- Ghatkopar Railway Station: 6.6 kms.
- Eastern Express Highway: 9 kms





EMBRACE A FUTURE
PROFUSE WITH
INTELLIGENT DESIGN



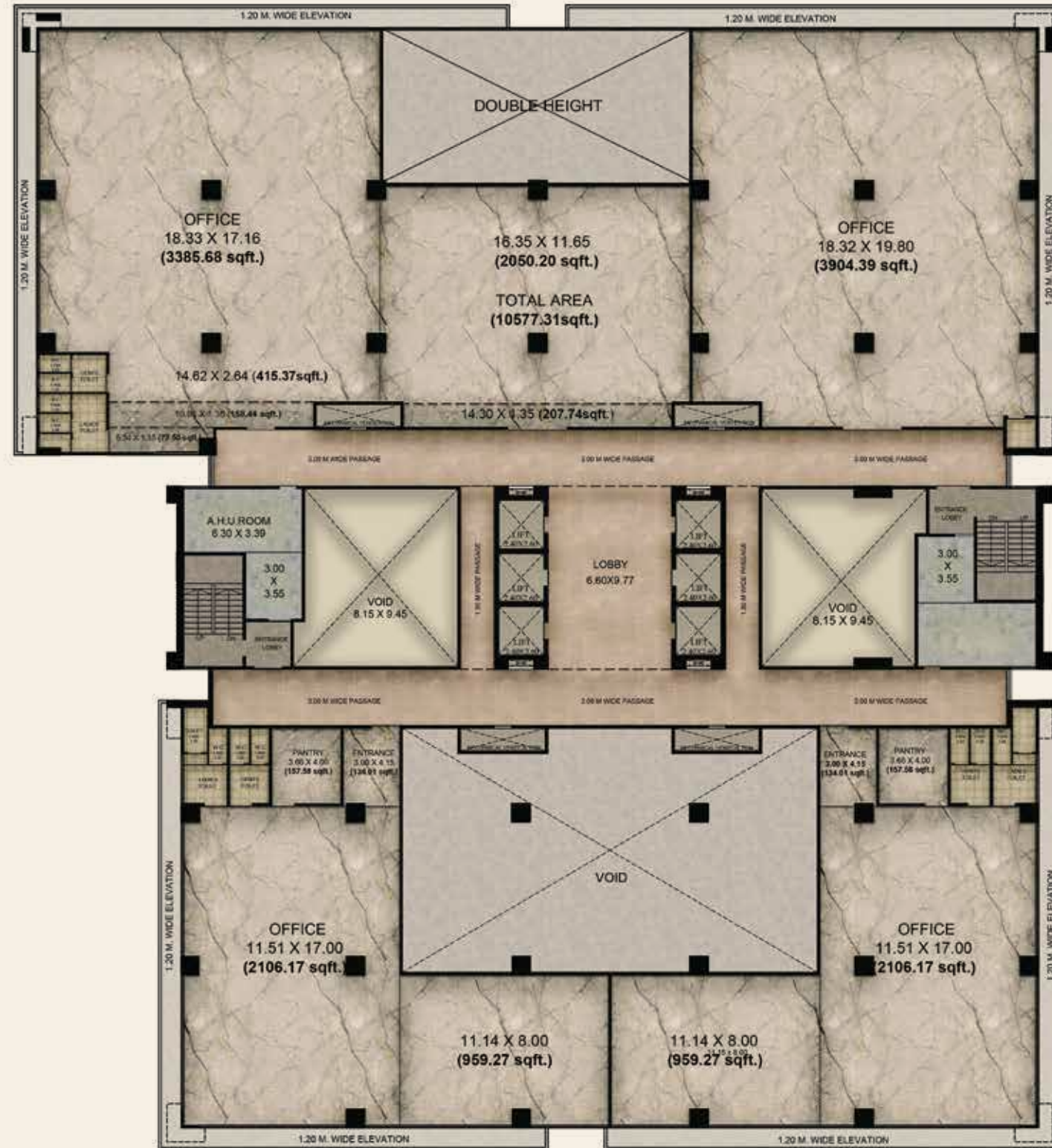
BASEMENT FLOOR PLAN





GROUND FLOOR PLAN





1ST FLOOR PLAN





2ND TO 5TH FLOOR





A SPACE DESIGNED ONLY WITH
YOUR BUSINESS IN MIND

The logo for A20 Realty, featuring the text 'A20' in a large, white, serif font.

REALTY

ARIF FAZLANI GROUP



PALLADIUM

ANDHERI EAST

WHERE POSSIBILITIES ARE ENDLESS
AND PROSPECTS, MATCHLESS

A2O

REALTY

ARIF FAZLANI GROUP

www.a2o.com



: info@a2o.com



: 78678 78786

OFFICE ADDRESS: 1208 Ozone Biz Centre, Mumbai Central, Mumbai 400 008.

Disclaimer: All the images, pictorials, visuals, elevations, perspectives, illustrations, model, stock images, specifications, plans, designs, drawings, dimensions, maps, facilities, amenities, features, and other information / details herein are conceptual, indicative and for representation purpose only and are not to scale, and is subject to the approval of the respective authorities. The Promoters / Developers / Architect reserve the right to add, alter, delete or replace any of these in the interest of the development, without any notice or obligation. All the matter presented here at the exhibition does not constitute any offer or contract of any nature whatsoever between the Promoters / Developers and the recipient. All transactions shall be subject to and governed by the terms & conditions of the Agreement for Sale to be entered into between the parties. Stock image used for representational purpose only

The project is registered via MahaRERA registration number: P51800031821 and is available on the website: <https://maharera.mahaonline.gov.in> under registered projects.